

# Building a Path to Data Intelligence

**OneTrust DataGovernance**  
DATA INTELLIGENCE SOFTWARE

# Today's Speaker



**Leila Jacob**

**CIPP/E, CIPM**

Data Governance Solutions Engineer  
OneTrust

# Today's Agenda

**01** | The Data Landscape

**02** | Keys to Bridge the Gap

**03** | How OneTrust Supports

# The Data Landscape

# The Modern-Day Data Problem

## TODAY'S COMPLEX DATA ECOSYSTEM



SaaS Systems



Data Lakes



Data Processing



Third Party Data

## CREATES DIFFERENT CHALLENGES



Large Data Volume



Hidden Data



Toxic Data



Inferred Data

## THAT POSE THREATS TO YOUR BUSINESS



Data Breaches



Compliance Risk




Policy Violations




Breach of Contract

THIS CREATES UNIQUE CHALLENGES FOR DIFFERENT STAKEHOLDERS IN YOUR BUSINESS

**Customer Service**

Need for smarter call routing




**Ops Teams**

Optimize processes



**Marketing**

Tailor outreach



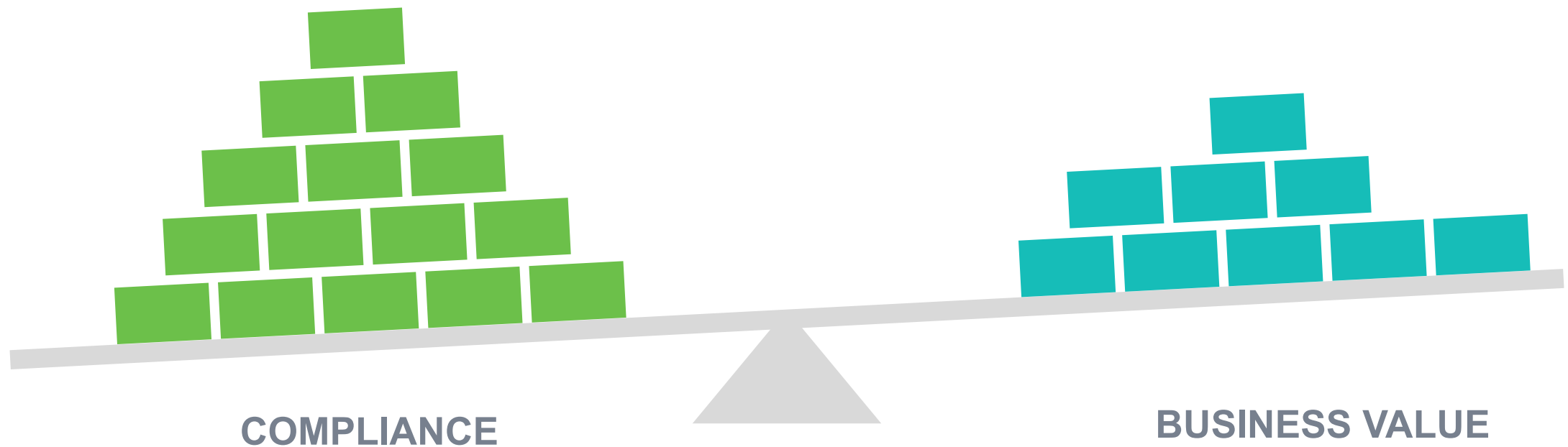
**Sales**

Quantify leads

**Across An Organization, There is More Data Available to the Business to Leverage Than Ever Before**

# Creates a Business Problem

The Balance Between Compliance and Value

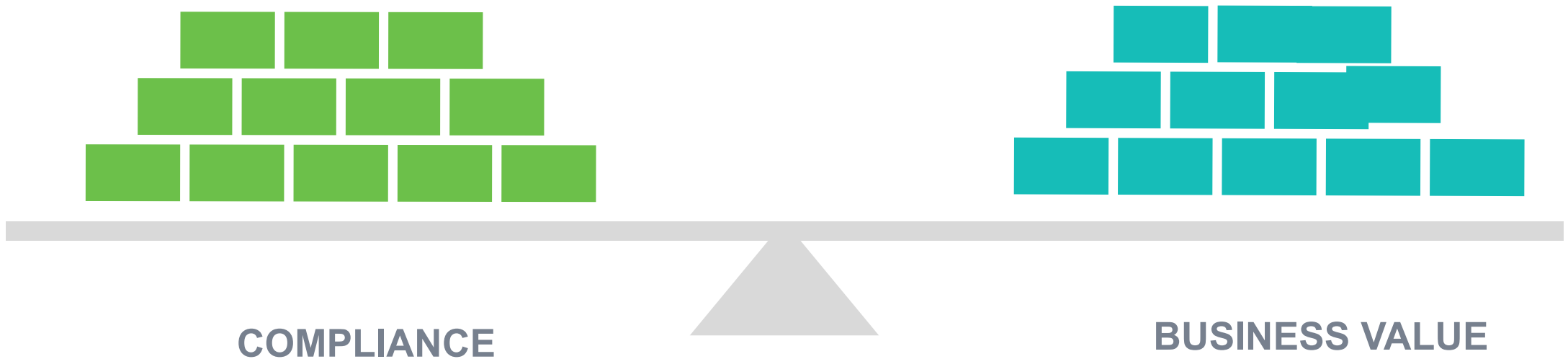


Build Trust and Minimize Risk  
Through Transparency & Compliance

Build Trust in the Data Through  
Quality and Consistency

Leverage Data as a Differentiator to  
Drive Innovation and Business Value

# Data Intelligence is Built from a Unified Governance Strategy



UNIFIED DATA GOVERNANCE PROGRAM



# The Four Steps Towards Data Intelligence

# The Four Steps Towards Data Intelligence

1

## KNOW YOUR DATA

Discover & Classify Data, Apply Business & Regulatory Context, Ensure Data Quality, Centralize in a Catalog

2

## GOVERN YOUR DATA

Define Data Policies such as Access, Retention & Residency, Data Minimization, Data Protection, Demonstrate Compliance

3

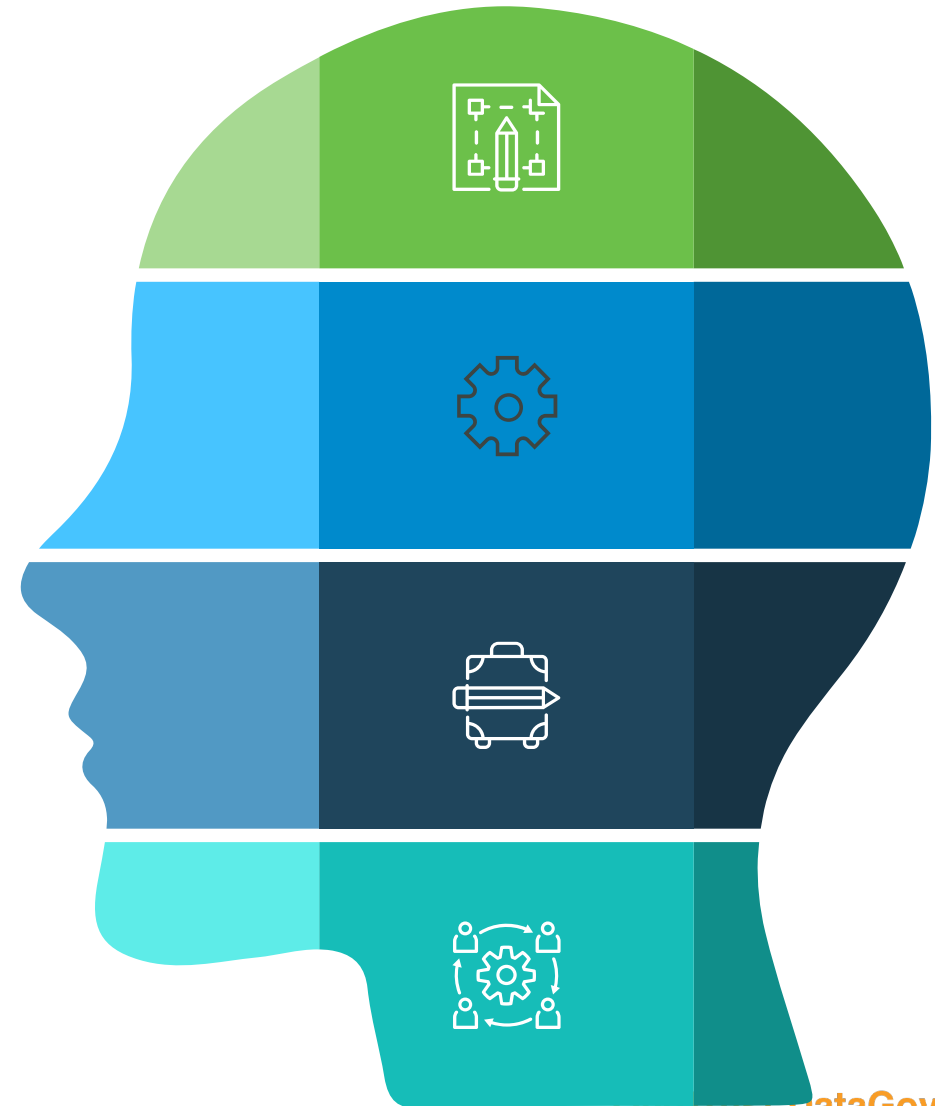
## USE YOUR DATA

Enable the Business to Browse and Find the Data They Need, Automate Policy Driven Access Requests

4

## IMPROVE YOUR DATA

Feedback and Trust Scoring, Policy Review & Updates, Progress Reporting, KPI & Metrics, ROI of Program



# The Four Steps Towards Data Intelligence

1

## KNOW YOUR DATA

Discover & Classify Data, Apply Business & Regulatory Context, Ensure Data Quality, Centralize in a Catalog

2

## GOVERN YOUR DATA

Define Data Policies such as Access, Retention & Residency, Data Minimization, Data Protection, Demonstrate Compliance

3

## USE YOUR DATA

Enable the Business to Browse and Find the Data They Need, Automate Policy Driven Access Requests

4

## IMPROVE YOUR DATA

Feedback and Trust Scoring, Policy Review & Updates, Progress Reporting, KPI & Metrics, ROI of Program



# Know Your Data

# Know Your Data: The First Step To Data Intelligence

## DISCOVER & CLASSIFY

AI-driven classification of structured & unstructured data

## APPLY BUSINESS & REGULATORY CONTEXT

Link business terminology and regulatory requirements

## ENSURE DATA QUALITY

Profiling of data through deep scanning beyond the metadata

## CENTRALIZE IN CATALOG

Capture results in central data inventories & catalog



# Know Your Data: The First Step To Data Intelligence

## DISCOVER & CLASSIFY

AI-driven classification of structured & unstructured data

## APPLY BUSINESS & REGULATORY CONTEXT

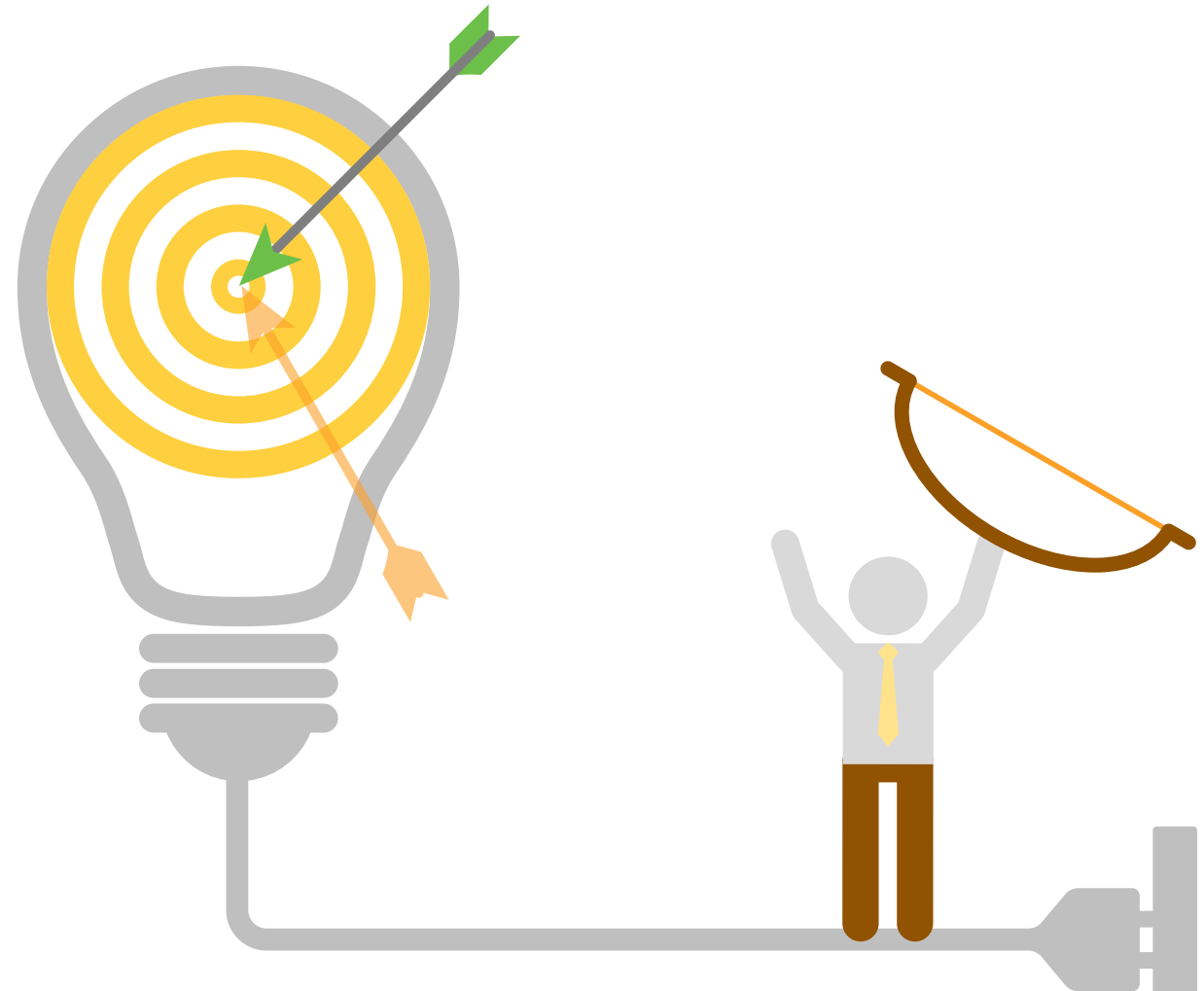
Link business terminology and regulatory requirements

## ENSURE DATA QUALITY

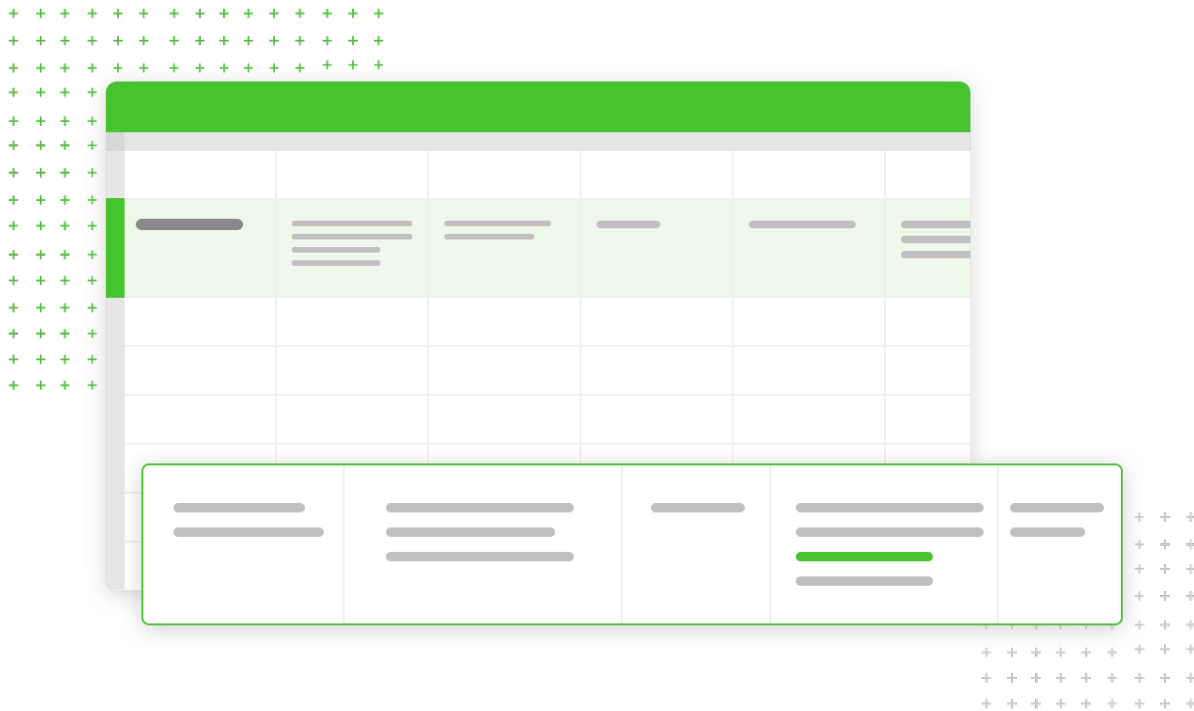
Profiling of data through deep scanning beyond the metadata

## CENTRALIZE IN CATALOG

Capture results in central data inventories & catalog



# Traditional Metadata Discovery Only Scratches the Surface



## Human & Machine Error

Common errors can range from mismatched column information to completely incorrect information tables.



## Data Drift & Mutation

Minor tweaks to data, system upgrades or cloud migration could lead to mutation of data.



## Metadata Corruption

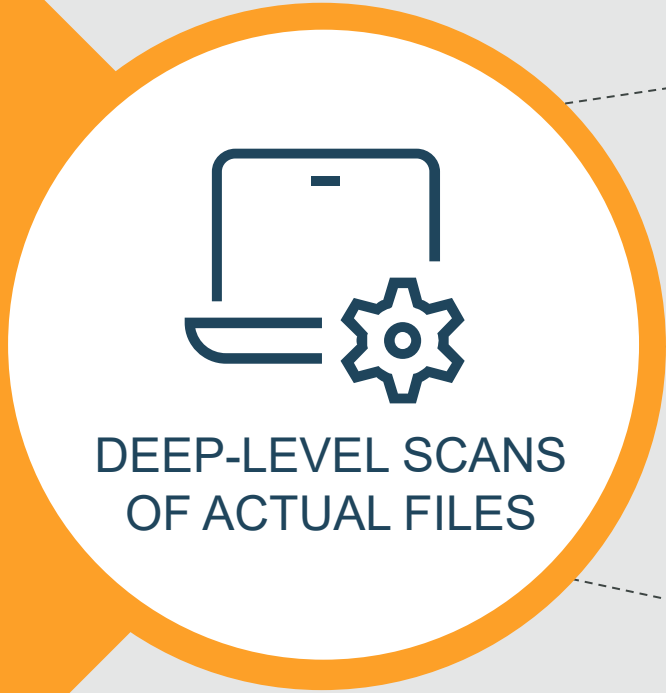
Unexpected system outages and failures could lead to database metadata corruptions.

# Deep-Level Discovery Goes Deeper Than Metadata

**STRUCTURED DATA**  
SQL | RDBMS | XSL

**SEMI-STRUCTURED DATA**  
Data Lake | NoSQL | HTML | RDF

**UNSTRUCTURED DATA**  
Email | PDFs | Audio/Video | Images



PRODUCT DATA



CUSTOMER DATA



TRANSACTIONAL DATA



# Know Your Data: The First Step To Data Intelligence

## DISCOVER & CLASSIFY

AI-driven classification of structured & unstructured data

## APPLY BUSINESS & REGULATORY CONTEXT

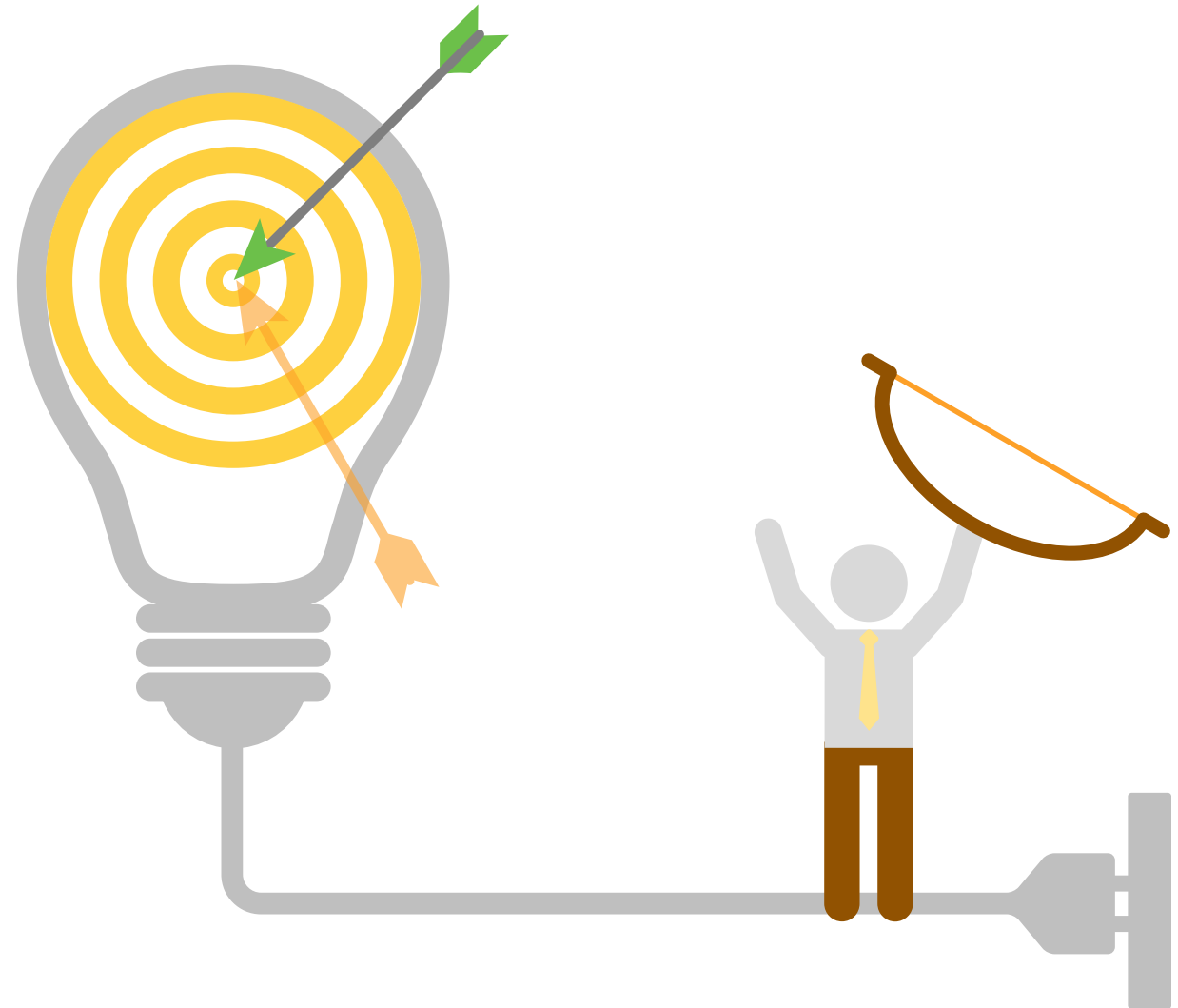
Link business terminology and regulatory requirements

## ENSURE DATA QUALITY

Profiling of data through deep scanning beyond the metadata

## CENTRALIZE IN CATALOG

Capture results in central data inventories & catalog



# Accurate Classification for Compliance and Data Professionals



EMPLOYMENT DATA



EMPLOYMENT DATA



EMPLOYMENT DATA



THIRD-PARTY DATA



CUSTOMER DATA



PERSONAL HEALTH INFORMATION



PERSONAL DATA



PII



MEDICAL RESEARCH DATA

GDPR

CCPA

HIPPA

# Myriad of Complex and Evolving Regulations



# Assign Ownership and Roles

For the collection of business context



Data Stewards



Technical Owners



Business Owners

# Know Your Data: The First Step To Data Intelligence

## DISCOVER & CLASSIFY

AI-driven classification of structured & unstructured data

## APPLY BUSINESS & REGULATORY CONTEXT

Link business terminology and regulatory requirements

## ENSURE DATA QUALITY

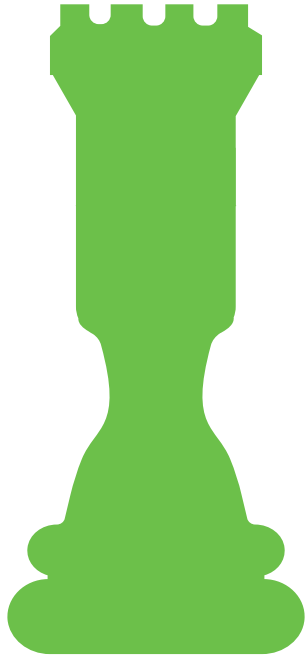
Profiling of data through deep scanning beyond the metadata

## CENTRALIZE IN CATALOG

Capture results in central data inventories & catalog



# What Makes Quality Data?



## COMPLETENESS

Do I have all fields necessary for my intended purpose?



## CONSISTENCY

Are there discrepancies when comparing two or more aspects of the data?



## TIMELINESS

When was the data collected?  
Is the information available when you need it?



## UNIQUENESS

Is this the only instance in which this information appears in the database?



## VALIDITY

Is the data relevant to the field it was collected for?

# Know Your Data: The First Step To Data Intelligence

## DISCOVER & CLASSIFY

AI-driven classification of structured & unstructured data

## APPLY BUSINESS & REGULATORY CONTEXT

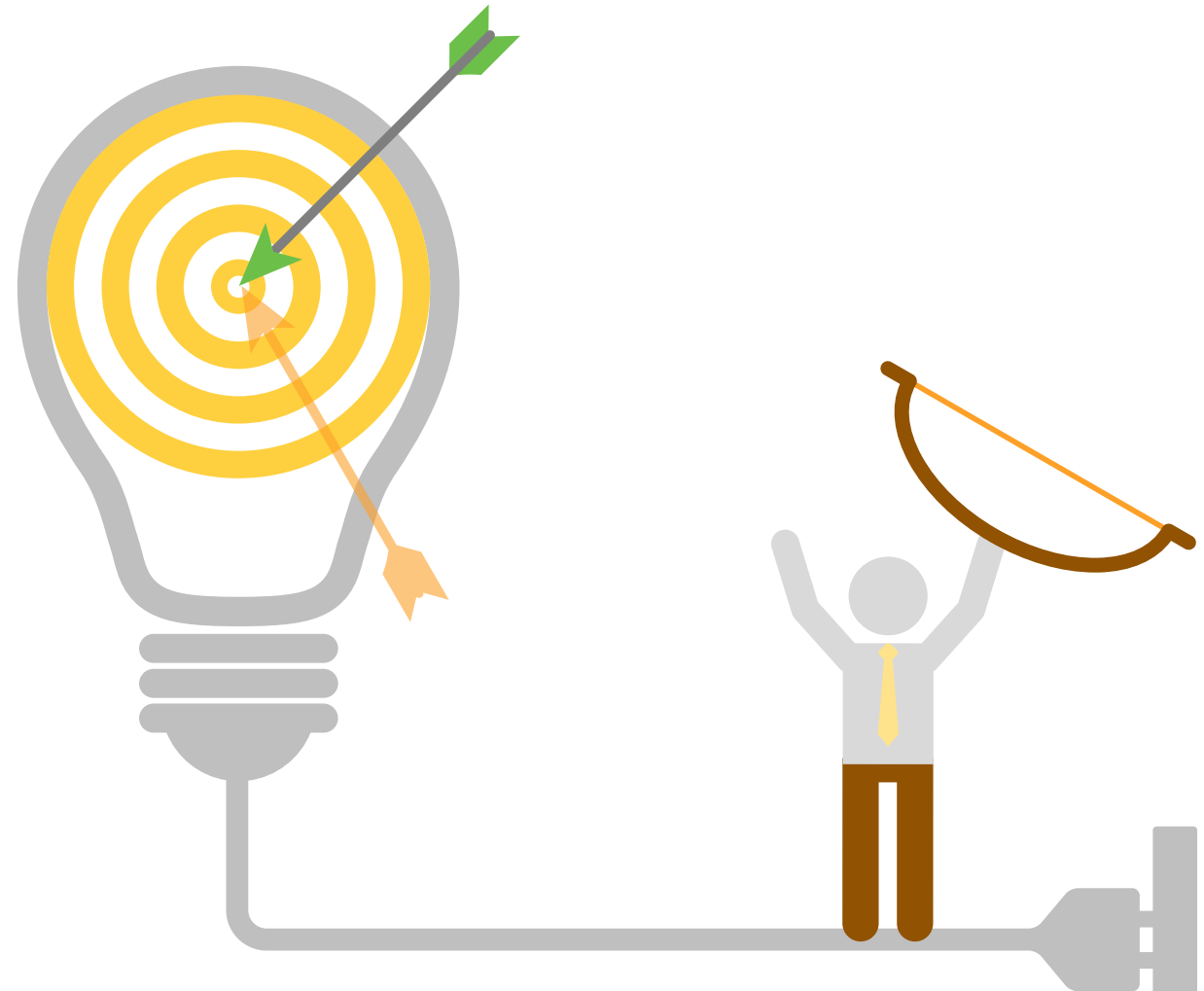
Link business terminology and regulatory requirements

## ENSURE DATA QUALITY

Profiling of data through deep scanning beyond the metadata

## CENTRALIZE IN CATALOG

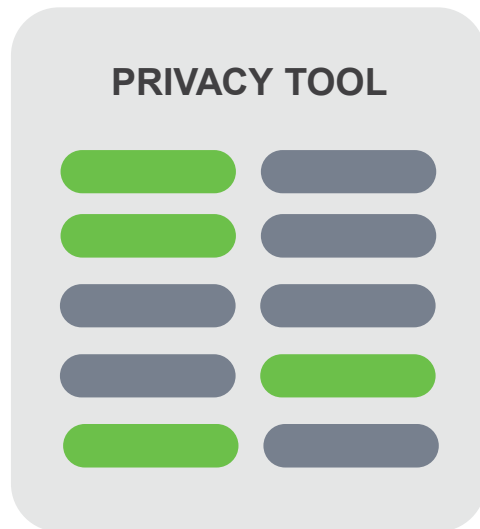
Capture results in central data inventories & catalog



# Data Intelligence Can't Be Done in a Silo

Separate tools for privacy, security, and data governance causes **multiple business processes, duplicate data entry and maintenance, and lack of visibility**

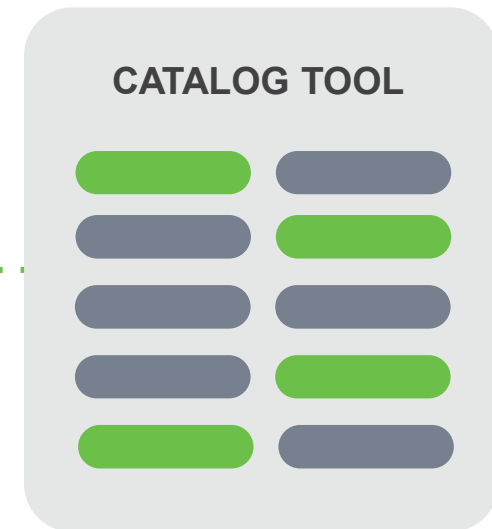
**DATA MAPPING / ROPA**  
*Privacy*



**IT RISK MANAGEMENT**  
*Security*



**DATA CATALOG**  
*Data Stewards*





# Data Intelligence Can't Be Done in a Silo

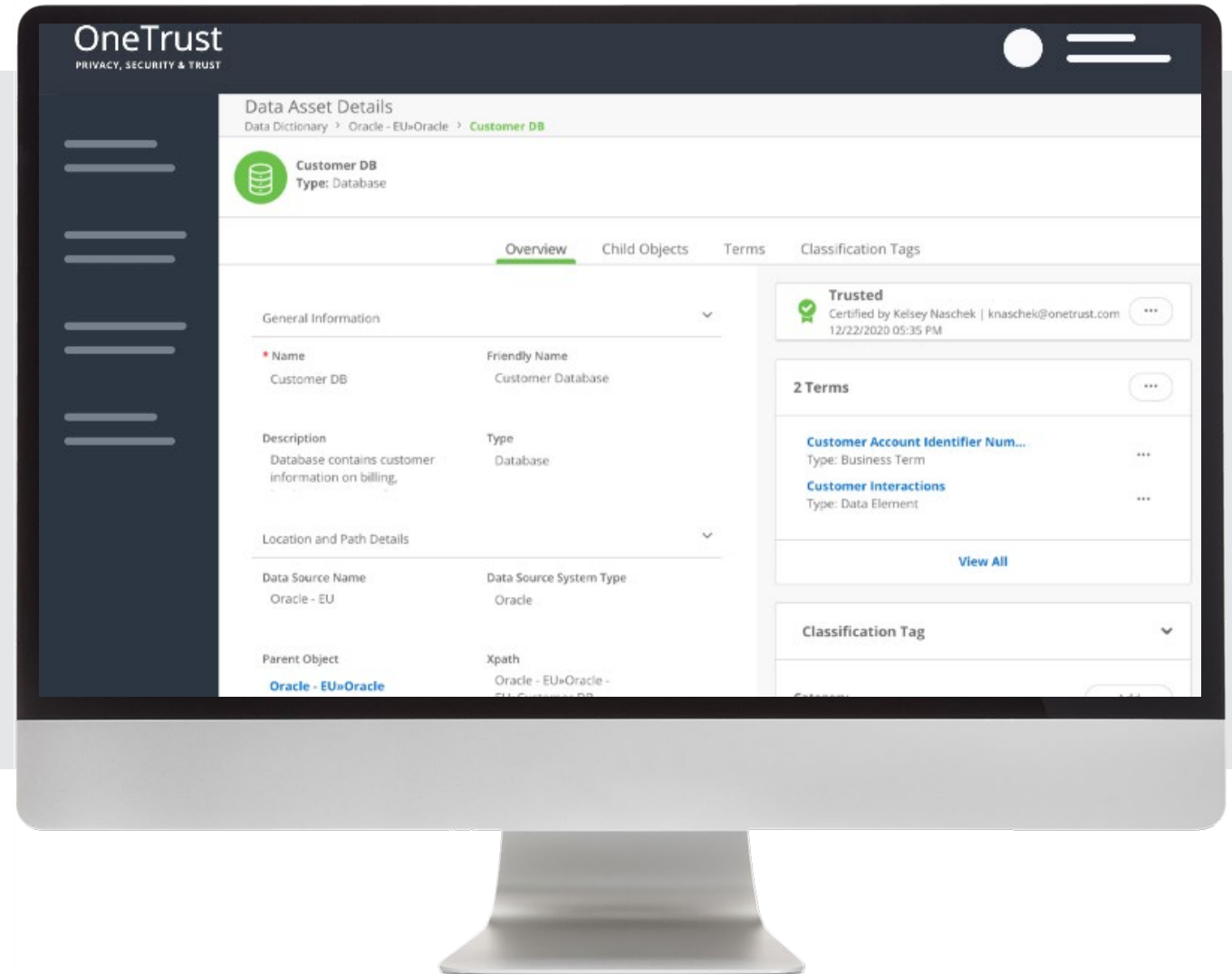
A central tool allows for a data to be discovered and populated once, then used for different purposes, **streamlining different views & actions for different stakeholders**

**OneTrust**  
PRIVACY, SECURITY & GOVERNANCE



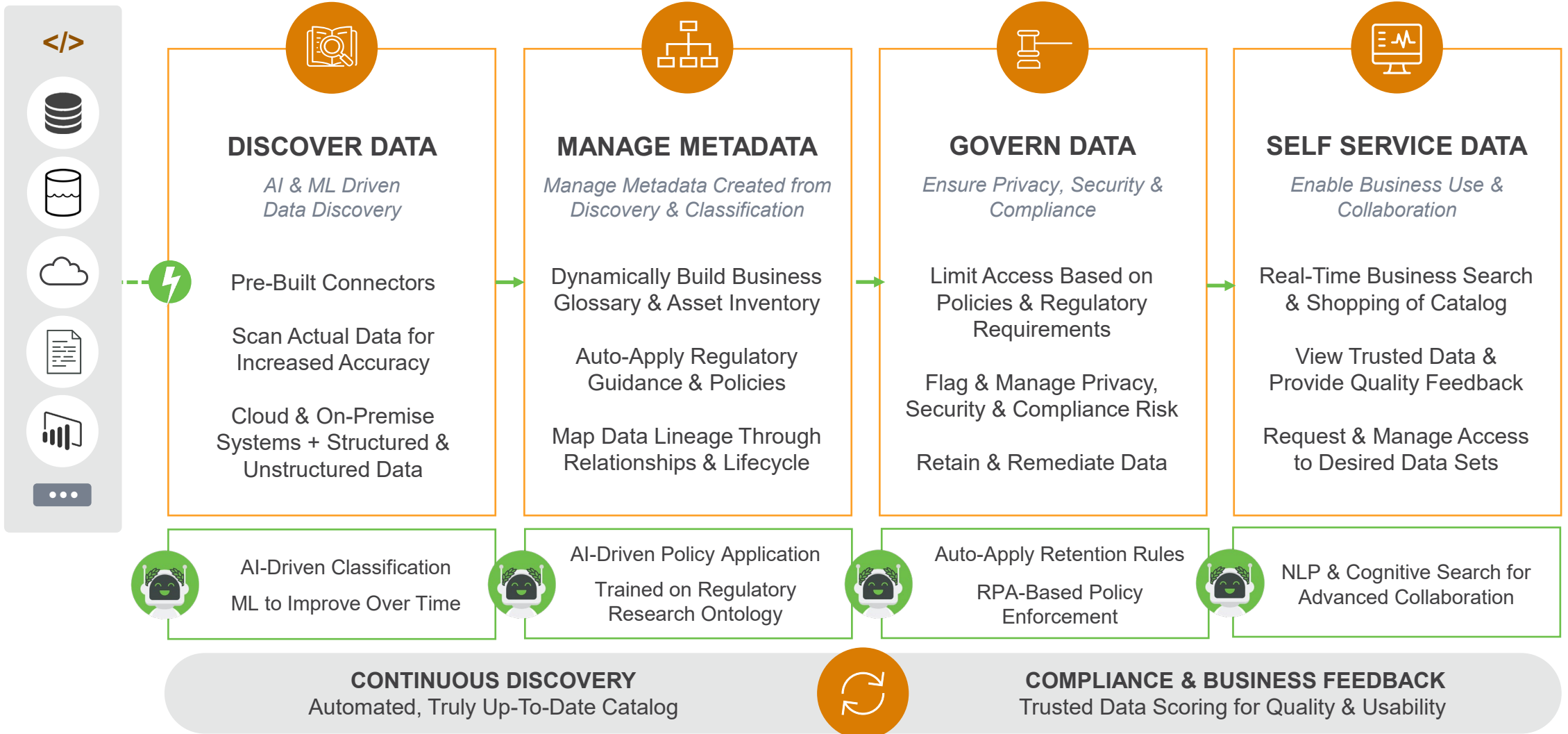
# Leverage a Data Dictionary to Manage Data through a Controlled Vocabulary

- Central repository of data assets, business context and technical metadata
- Relationships between the data assets and the flow of information throughout the organization
- Business glossary
- Regulatory scope of the data
- Retention policies and age of data



# How OneTrust Helps

# OneTrust DataGovernance



# Learn More

Visit: [OneTrust.com](https://OneTrust.com)

All Resources: [onetrust.com/resources/](https://onetrust.com/resources/)

Request a Demo: [onetrust.com/request-demo/](https://onetrust.com/request-demo/)



@OneTrust