

COMPASS & Erwin DI

Cloud Based Automated Data
Governance Management System &
Erwin Data Intelligence Suite

- ✓ Introduction and Demonstration
- ✓ Robert Lutton – Sandhill Consultants
- ✓ Jeff Giles – Sandhill Consultants

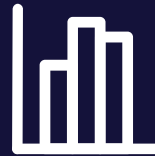


Common Understanding of what Enterprise Data Governance is



What is Enterprise Data Governance?

Enterprise Data Governance is a collection of standardized processes, roles, policies, standards, and metrics for formal management of data assets



What does it do?

It's about controlling all outcomes of a data asset (Quality, Security, etc)



Why is it Important?

Enterprise Data Governance leads to Improved Business Outcomes, Reduced Risk, Compliance, and improved quality of decision making

Top 5 Symptoms of Poor Data Governance

I don't trust the data -
Poor data quality

Who is responsible?
- **Deficient ownership of data**

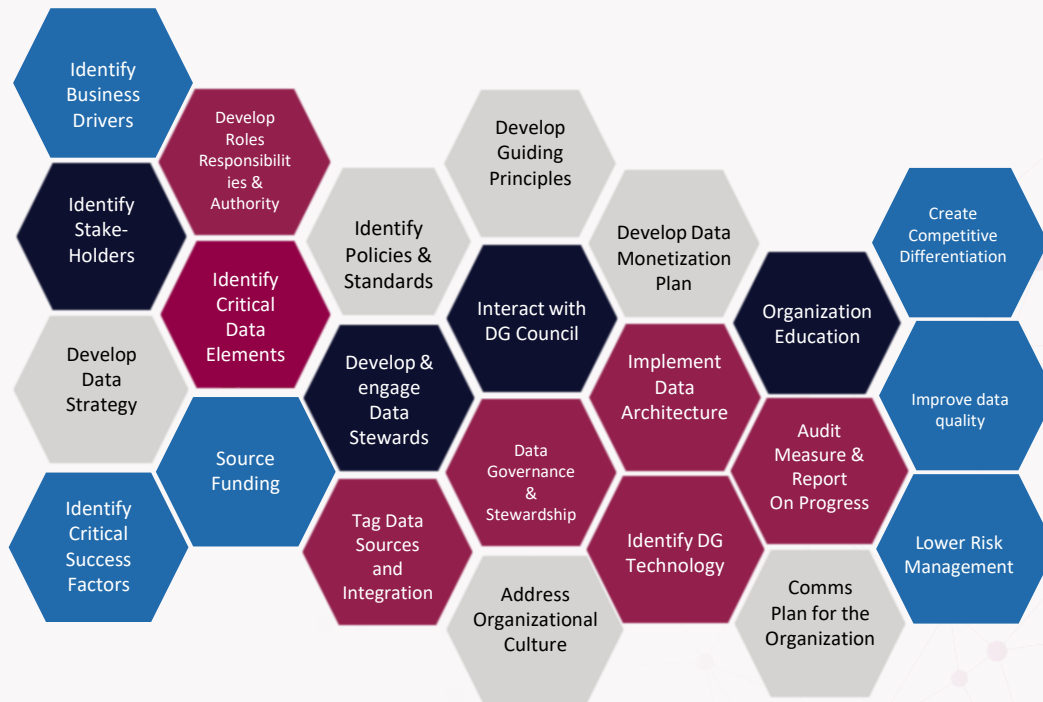
Where is and which version of the data do I use? - **Data silos**

I can't find the data that I need – **Lack of data transparency**

What am I supposed to be doing? - **Lack of data governance & leadership**



Complex Intersections of People, Process, and Planning



Interconnections of Governance

- Plans for governing work
- People assigned to the work
- Processes that enable the governance
- Factors that measure the outcome of governance

Unique for each organization, driven by organizational goals.

Enterprise Data Governance TIMELINE

COMPASS

Compliance

Organization

Measurement

DG Policy

Data Architecture

DG Standards

DG Stewardship

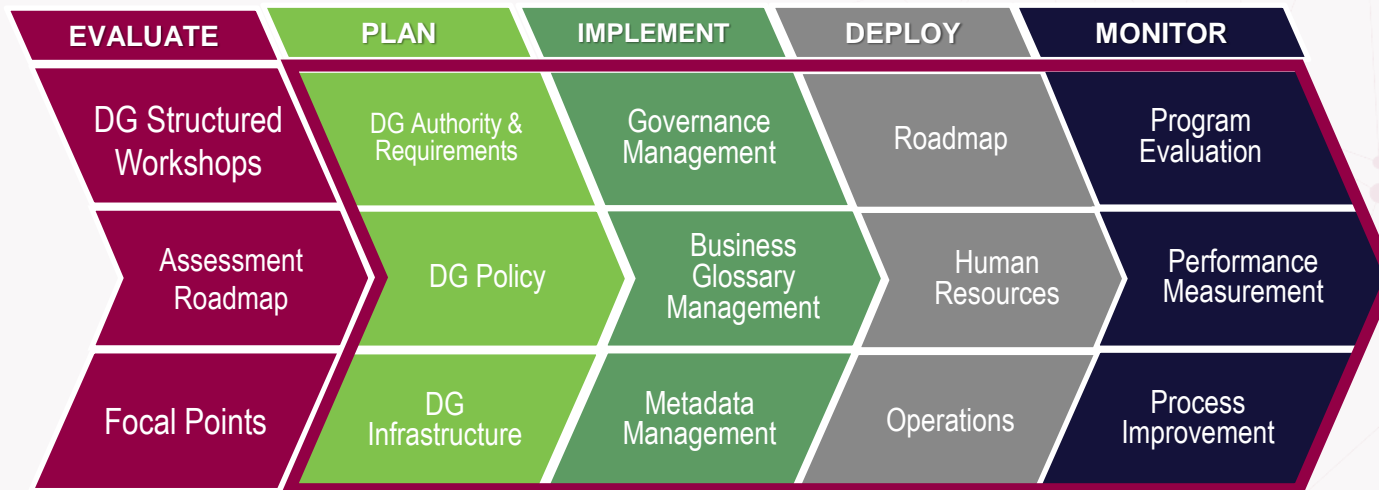


Build vs Buy

Why does COMPASS exist – Why it can help you

Many organizations are looking to for an effective solution to quickly build, improve and measure their enterprise data governance program

Governing the DG Process requires the following



CMMI / DMM
Assessment

COMPASS

© Sandhill Consultants - 2020

COMPASS DEMONSTRATION

See how to use the integrated governance framework assets



THE DG SCENARIO

The CDO / Data Leader has been tasked with creating a new Data Governance Program to resolve the issues mentioned in our thought bubbles earlier

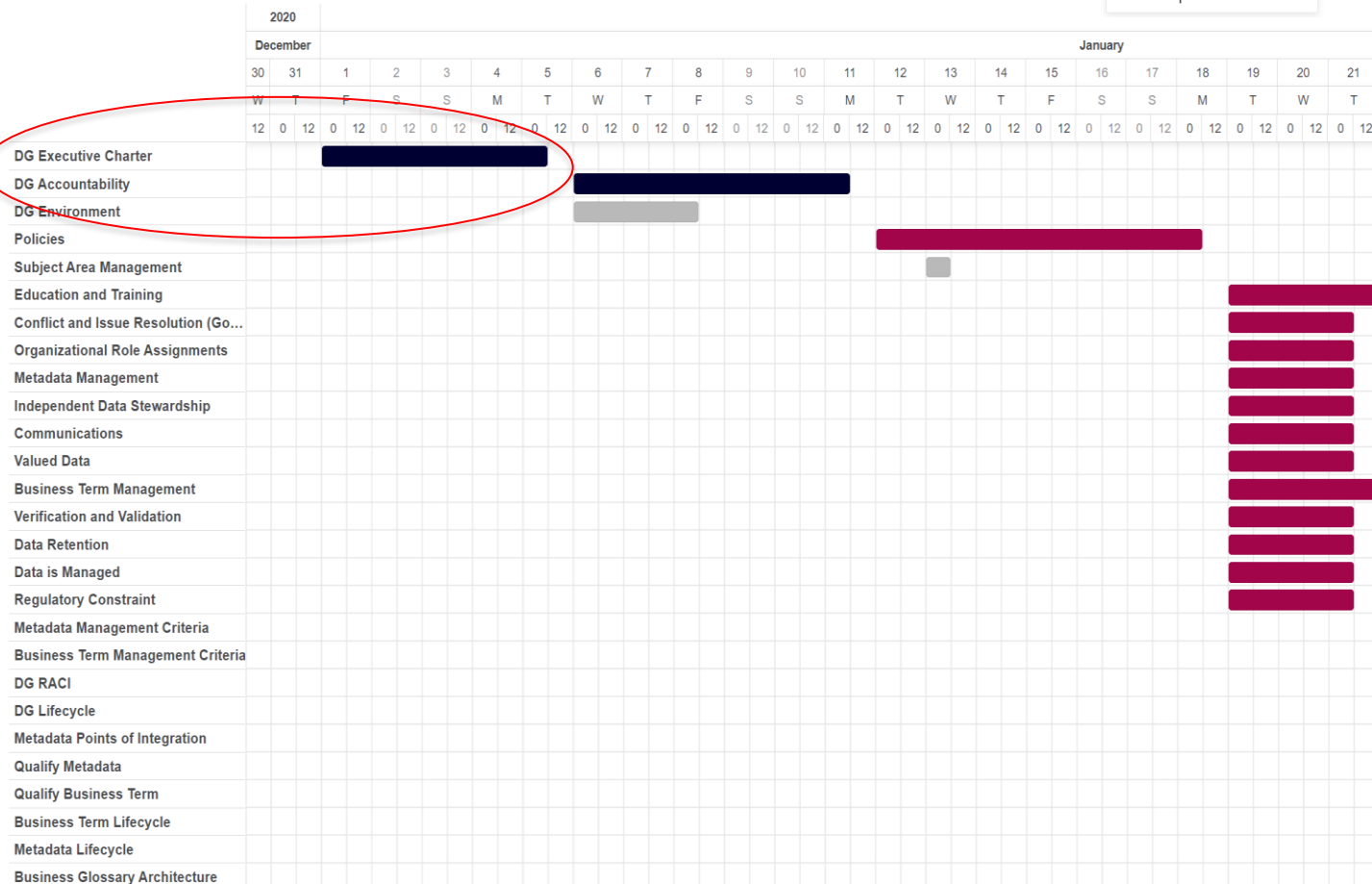


Sandhill

DATA GOVERNANCE PROJECT OVERVIEW

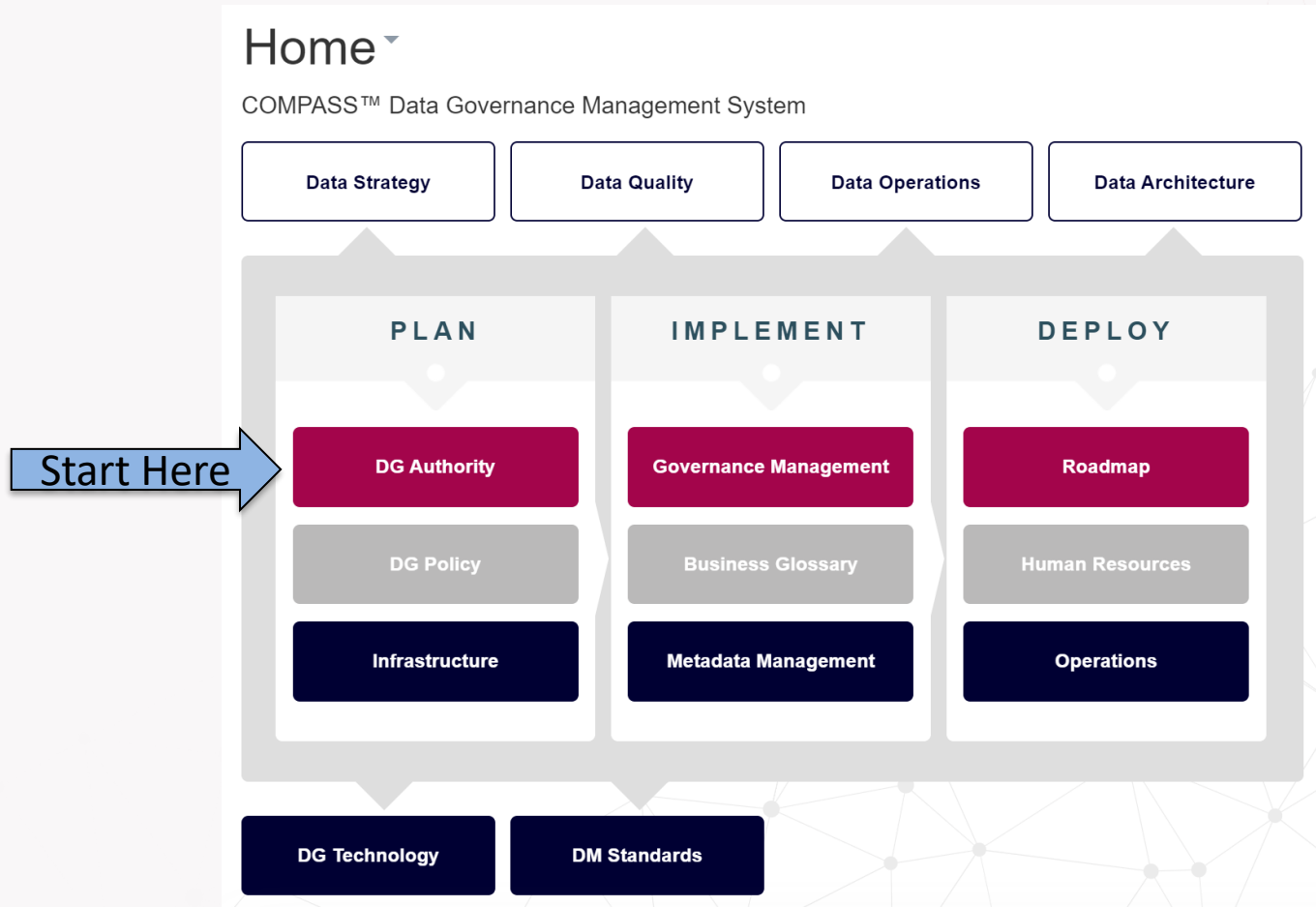
Task

- Not started
- In progress
- Completed



COMPASS HOME

Step 1









DG AUTHORITY

Home / DG Authority

DG Authority

[+ Create](#)[Q Search](#)[Q Search more](#)[Reset list](#)[Views](#)[Files](#)[📦](#)[Σ](#)[i](#)

  SUBTOPIC ▼	MODIFIED AT ▼	STATUS ▼
 1.1.1 Data Governance Authority Overview	4/7/2021 18:34:14	Untouched
 Plan - DG Executive Charter	4/20/2021 10:37:32	Revisit
 DG Mission and Scope	4/16/2021 11:59:52	Approved
 DG Accountability	3/22/2021 22:14:27	Untouched
 DG Environment	3/12/2021 14:07:19	Untouched

Click

Page 1 of 1

⏮ ⏪ 1 ⏩ ⏭

Records 5

Pagesize:

10

20

50

100

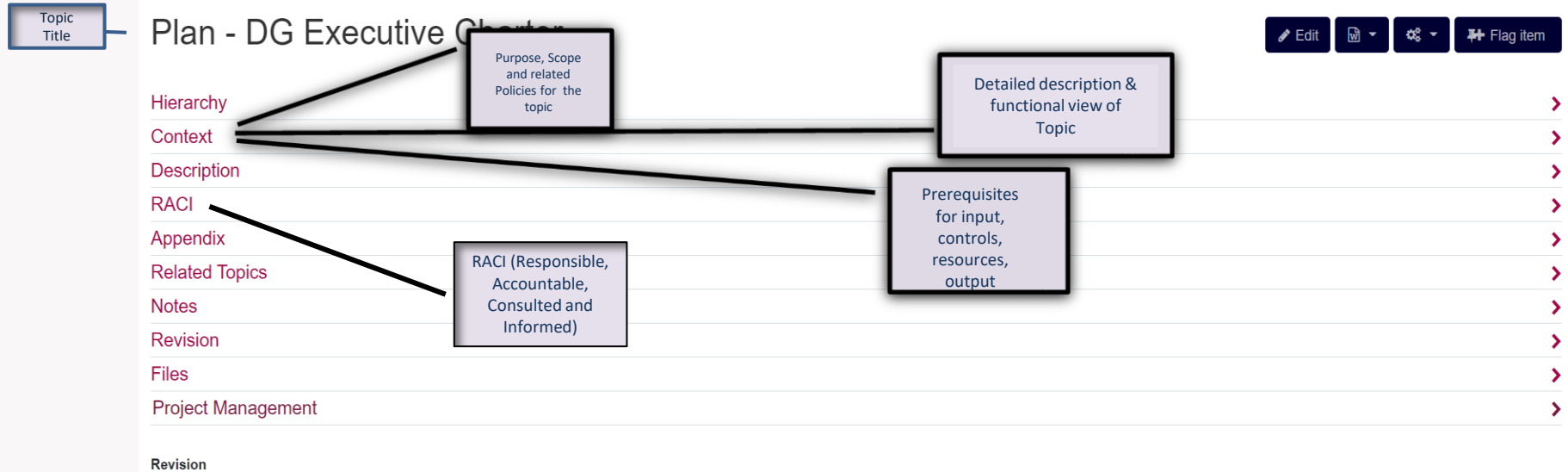
500

Sort Order A-Z

Parameter:

Topic = DG Authority

Typical Topic Driven Page – Standard Template



Typical Topic Driven Page - Description

Topic Title

Plan - DG Executive Charter

Edit

Flag item

Hierarchy

Context

Description

Detailed description & functional view of Topic

>

>

▼

Functional View

The Stakeholder Executives and Managers who are accountable for assigning and managing Resources create the Data Governance Executive Charter using the Data Management Strategy and Resource Commitments under the Controls of Business Drivers, DG Sponsor Executive Directives, Regulatory Constraints, and Organization Standards to Authorize the creation of the DG Mission and Purpose, Authority Responsibilities Matrix, and the DG Functions.

```
graph LR; subgraph Inputs; IS1[Data Management Strategy]; IS2[Resource Commitment]; end; subgraph Controls; C1[Business Drivers]; C2[DG Sponsor Executive Directives]; C3[Regulatory Constraints]; C4[Organization Standards]; end; Inputs --> C[Create Data Governance Executive Charter]; Controls --> C; C --> O[Outputs]; C --> R[Resources]; O --> EC[Executive Charter]; EC --> EC1[DG Mission and Scope]; EC --> EC2[DG Accountability]; EC --> EC3[DG Authority RACI]; EC --> EC4[Data Governance Functions]; R --> R1[Stakeholder Executives and Managers who are Accountable for Assigning and Managing Resources];
```

1.1.1 DG Executive Charter v5 20210302.mmap.png

Process View

Typical Topic Driven Page -RACI

Topic Title

Plan - DG Executive Charter

Edit

Download

Settings

Flag item

Hierarchy

Context

Description

RACI

RACI Level

All

RACI Function

RACI (Responsible,
Accountable,
Consulted and
Informed)

	FUNCTION	DG AUTHORITY
	Create Executive Charter	A

RACI Process

	PROCESS	FUNCTION	DG AUTHORITY	LEAD STEWARD	STRUCTURE STEWARD	PROCESS STEWARD	CONTENT STEWARD	BUSINESS A
	Create Executive Charter Document	Create Executive Charter	A	R				
	Establish a set of data governance policies.	Create Executive Charter	A					
	Define and develop the DG processes and standards	Create Executive Charter	A	R	R	R	R	C
	Develop the DG Responsibility Matrices	Create Executive Charter	A					
	Define and develop DG Metrics	Create Executive Charter	A					

RACI Task

	PROCESS	TASK	DG AUTHORITY	LEAD STEWARD	STRUCTURE STEWARD	PROCESS STEWARD	D/
	Establish a set of data governance policies.	Enhance communications and collaboration among uni...	A	I	I	I	I
	Establish a set of data governance policies.	Establish a set of data governance policies that p...	A				

POLICY MAP

[Home](#) / [DG Policy](#) / Data Governance Policy Overview

Data Governance Policy Overview

[Edit](#) [Print](#) [Share](#) [Flag item](#)

[Hierarchy](#)

[Context](#)

Purpose

The purpose of the Policy Overview is to provide a mapping of the Data Governance Policies and their related Subtopics and cross-functional interactions.

Scope

All policies in held in COMPASS.

Directives, Policies, and Guidance

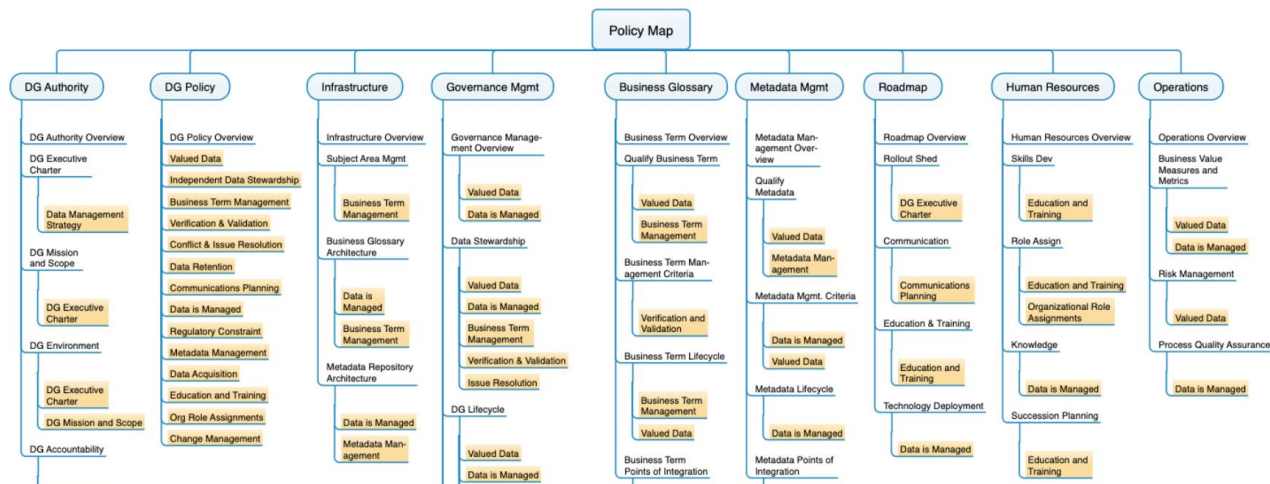
The Data Governance Policies are derived from the DG Charter, which is derived from the Data Management Strategy.

Description

Functional View

The following diagram indicates the mapping of the COMPASS Subtopics to their respective Policies and cross-functional interactions.

The Policy Map should be consulted in the Policy Change process, Risk Management and Impact Analysis tasks. This mapping should be maintained as policies are added, edited, or deleted, to maintain the coherence.



CUSTOMIZABLE CONTENT

Home / DG Policy

DG Policy

SUBTOPIC

Data Privacy Policy (Draft)

Policy Guidelines

Data Privacy Policy

Data Governance Policy Overview

Valued Data Policy

Data Access Policy (Draft)

Independent Data Stewardship Policy

Business Term Management Policy

Verification and Validation Policy

Conflict and Issue Resolution (DG Policy)

Data Retention Policy

Managed Data Policy

Communications Policy

Metadata Management Policy

Regulatory Constraint Policy

Education and Training Policy

Organizational Role Assignments Policy

Change Management Policy

Data Acquisition Policy (Draft)

Data Usage Policy (Draft)

Home / DG Policy / Data Privacy Policy (Draft)

Data Privacy Policy (Draft)

Hierarchy

Context

Purpose

To ensure that the individual's Personally Identifiable Information (PII) data is protected.

Scope

All data in use or storage within the organization that includes the following:

- Personal Data (PII) Identifiable by direct means - Example: Name, address, Phone, email address
- Sensitive Data (Need to know only) Identifiable by indirect means, in conjunction with other data - Example: Birth date, gender
- Sensitive Personal Data (direct or indirect)
- Secret Data (Disclosure, outside of need-to-know, would cause great harm)

Directives, Policies, and Guidance

To ensure that an individual's Personal Identifying Information is protected and managed in compliance with the requirements of governing regulatory bodies, those of other legal jurisdictions, such as the laws of a particular country or other entity.

Description

Functional View

Implementation Requirements

- Clearly specify the purpose for which the data will be collected
- Collect and use the minimum information needed to conduct specified business activities and achieve the business purpose
- Collect personally identifiable data only when necessary; use non-identifiable data whenever possible
- Ensure that data that are collected and/or used for business purposes are treated in accordance with stipulations of the legal or jurisdictional requirements

Mandatory Processes

Specify additional guidelines and/or mandatory processes and procedures:

- Identify the critical
- Identify the valid values s.

Promulgation Procedure

- Establish criteria for frequency of policy review
- Define specific Key Performance Indicators (KPIs)
- Define procedures, standards, and reporting requirements
- Establish appropriate accountability and responsibility for the management of PII data
- Train implementation personnel and deploy.

Escalation

Include contact information for escalation or questions regarding the Policy.
Any issue that arises from attempts to implement this policy should be documented and referred to the Data Governance Authority.

Shared Accountability and Assignments

RACI Level

All

RACI Function

← RACI Function

	FUNCTION	DG AUTHORITY
	Create Executive Charter	A

RACI Process

← RACI Process

	PROCESS	FUNCTION	DG AUTHORITY	LEAD STEWARD	STRUCTURE STEWARD	PROCESS STEWARD	CONTENT STEWARD	BUSINESS ANALYST	BUSINESS SME
	Create Executive Charter Document	Create Executive Charter	A	R					C
	Establish a set of data governance policies.	Create Executive Charter	A						
	Define and develop the DG processes and standards	Create Executive Charter	A	R	R	R	R	C	C
	Develop the DG Responsibility Matrices	Create Executive Charter	A						
	Define and develop DG Metrics	Create Executive Charter	A						

RACI Task

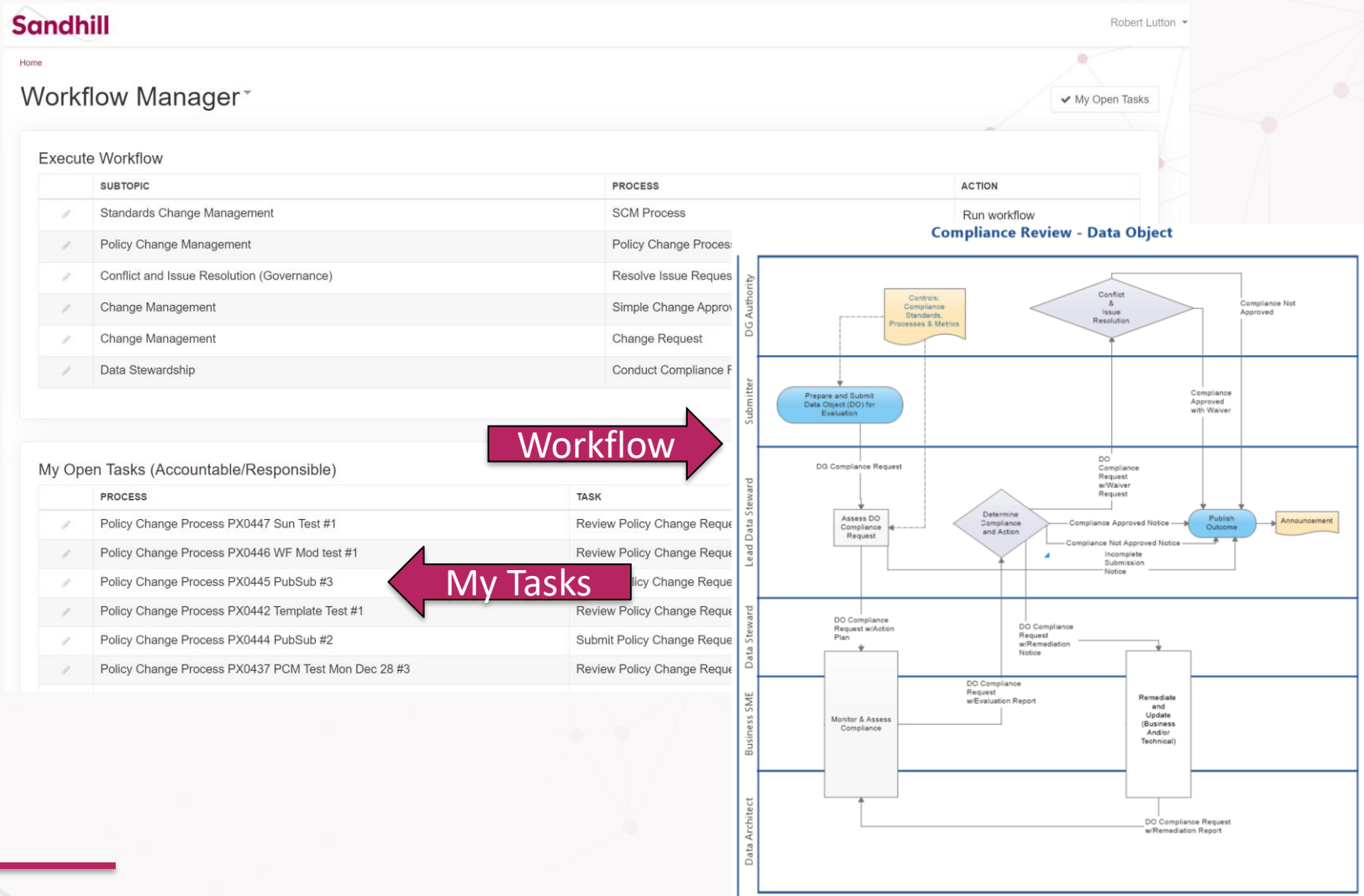
← RACI Task

	PROCESS	TASK	DG AUTHORITY	LEAD STEWARD	STRUCTURE STEWARD	PROCESS STEWARD	DATA STEWARD	BUSINESS ANALYST
	Establish a set of data governance policies.	Enhance communications and collaboration among uni...	A	I	I	I	I	I
	Establish a set of data governance policies.	Establish a set of data governance policies that p...	A					
	Define and develop the DG processes and standards	Establish a set of data standards that define the ...	A	R				C
	Define and develop DG Metrics	Establish a set of measures and metrics that can b...	A					
	Define and develop the DG processes and standards	Establish data governance processes that enhance o...	A	R				C
	Develop the DG Responsibility Matrices	Identify responsibilities and accountabilities for...	A					
	Establish a set of data governance policies.	Promulgate the concepts of "ownership" and "stewar...	A					
	Establish a set of data governance policies.	Provide periodic evaluation, assessment and recomm...	A					
	Define and develop the DG processes and standards	Provide training for data governance stewards, own...	A					

Responsibility Staffing

	ROLE NAME	PROJECT	USER	STATUS
	DG Authority		Ham Hayes	Proposal
	Lead Steward		Jesper Schneider	Selected
	Chief Data Officer		Ham Hayes	Selected
	Business Manager		Jeff Giles	Selected

COMPASS Workflows



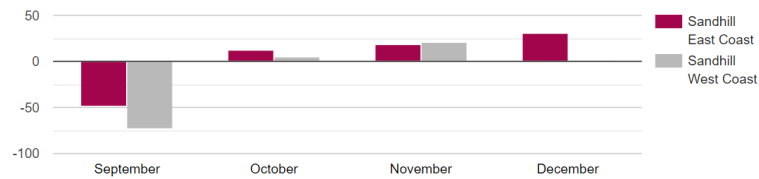
Dashboard – Metrics and Measurements

COMPASS Management Projects ▾

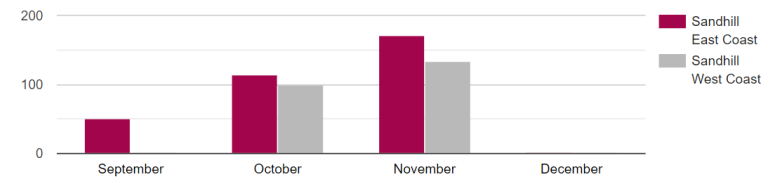
Task GANTT chart

Open Tasks

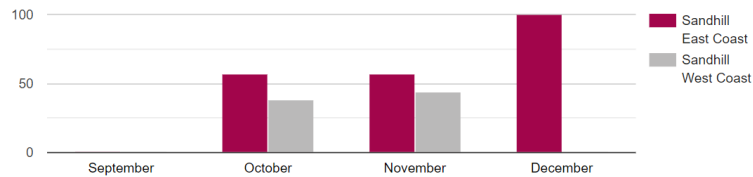
Average Variance (days)



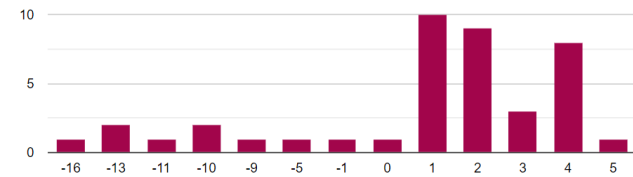
Completion Rate (%)



Quality Performance (% approved)



Total Schedule Variance (in weeks)



Business Cases

Revenue

- ✓ Customer Satisfaction
- ✓ BI Decision Making
- ✓ Risk Analysis

Risk

- ✓ Regulatory Requirements Compliance
- ✓ Reputation Management
- ✓ Data Security
- ✓ Data Sharing

Cost

- ✓ Optimize Staff Effectiveness
- ✓ Improve Operational Performance
- ✓ Mergers & Acquisitions
- ✓ IT Modernization Initiatives



The Value of COMPASS

Provides an integrated system for the rapid deployment, operation and analysis of strategic DG programs

4 Key Organizational benefits of COMPASS

- ✓ Provides an essential framework for rapid deployment operation and analytics of your strategic DG program
- ✓ Accelerates adoption of a DG program
- ✓ Maximises your investment in a DG solution
- ✓ Minimizes costs due to comprehensive pre-built COMPASS System, saving months of effort



COMPASS (DGMS) provides for better Data Quality that delivers better Business Value

Time to Day 1 - COMPASS vs Build

COMPASS vs Build

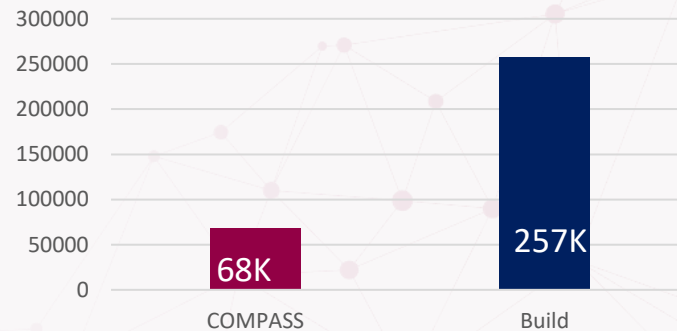
Based on:

- 4 Team Members
- 1 Year +
- Fully loaded costs

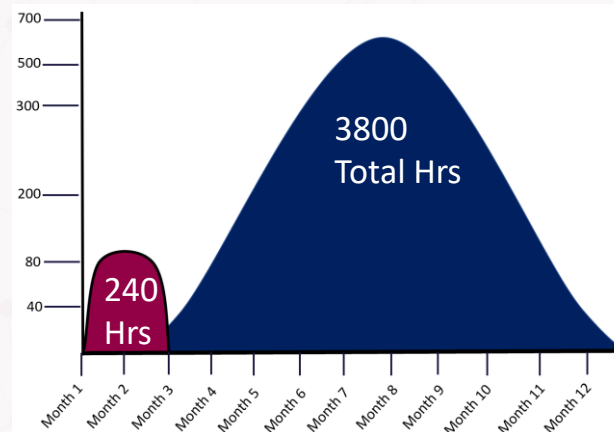
Deployment:

- COMPASS Available Day 1
- Build Available Day ???

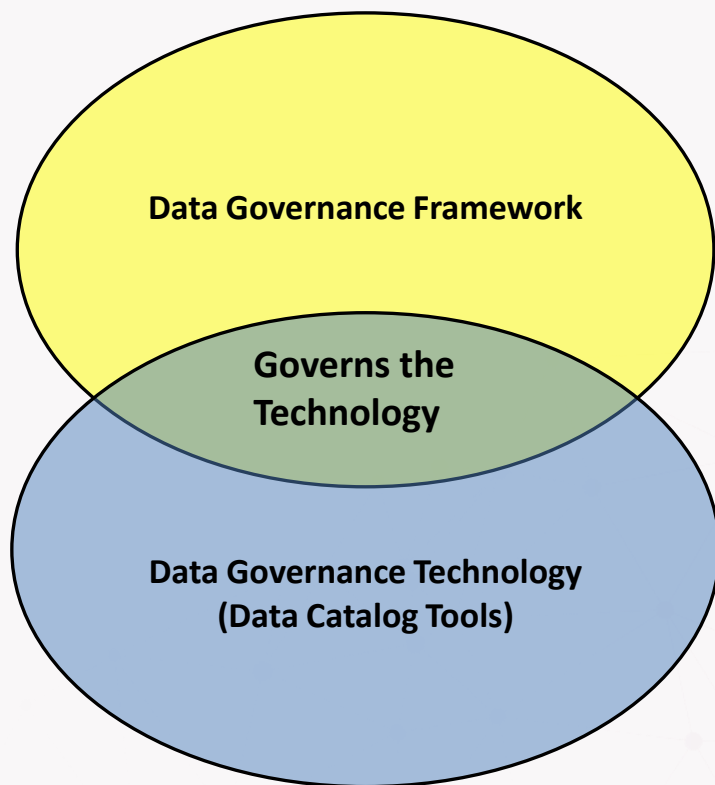
Costs COMPASS vs Build



Hours / per Month



Cooperation between Governance and Technology



Data Governance Program provides the consistent processes, roles, policies, standards, and metrics that Data Governance technology needs in order to manage data

Quality control over the data being governed

Data Governance Technology manages the data with guidance from the data governance program

C O M P A S S

Compliance

Organization

Measurement

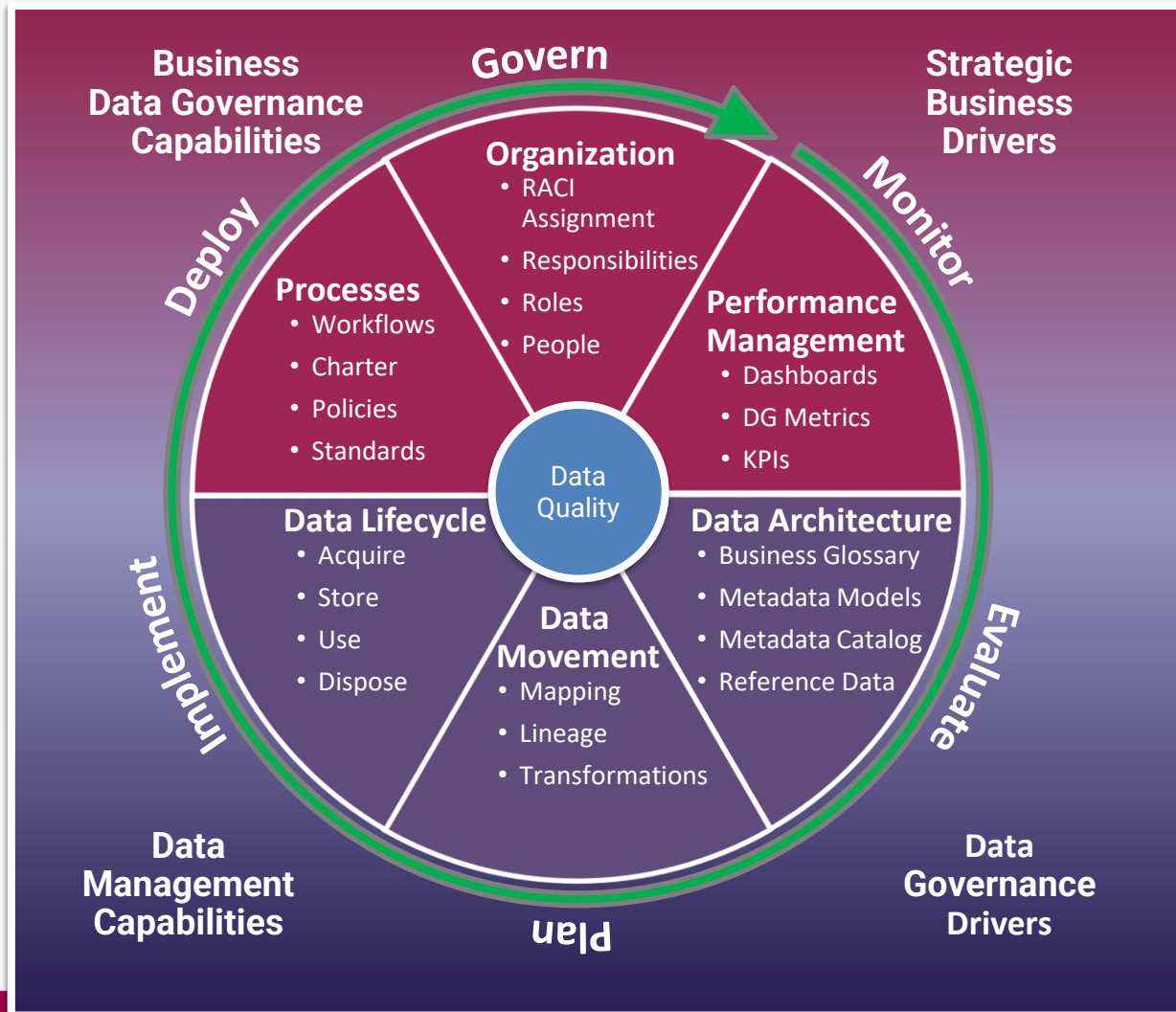
DG Policy

Data Architecture

DG Standards

DG Stewardship

Cloud based, Automated Data Governance Management System



ERWIN DIS DEMO SCENARIO

Financial Institution Data Governance Scenario

Long Term Goal: Manage costs by making information readily available to all parts of the business.

Business Requirement: The bank is required by law to inform loan recipients by mail of privacy and security protocols regarding information managed by the bank

Current Issue: The Business Analyst is finding it difficult to integrate address information as none of the address fields conform to any standard naming conventions.

GOVERNING POLICY

What is the Data Governance Policy concerning data integration

Home / DG Policy

DG Policy

🗄️	SUBTOPIC ▼
✎	Business Term Management Policy
✎	Verification and Validation Policy
✎	Conflict and Issue Resolution (DG Policy)
✎	Data Retention Policy
✎	Managed Data Policy
✎	Communications Policy
✎	Metadata Management Policy
✎	Regulatory Constraint Policy
✎	Education and Training Policy
✎	Organizational Role Assignments Policy
✎	Change Management Policy
✎	Data Acquisition Policy (Draft)
✎	Data Usage Policy (Draft)
✎	Data Integrity and Integration Policy (Draft)



Sandhill

Home / DG Policy / Data Integrity and Integration Policy (Dr...

Data Integrity and Integration Policy (Draft)

Hierarchy

Context

Purpose

The purpose of this policy is to improve the integrity of the organization's data, resulting in greater accuracy, timeliness, and quality. A further purpose is to ensure that key data elements can be integrated across functional units and electronic systems so that

Scope

Data integrity refers to the validity, reliability, and accuracy of data. Data integrity relies on a clear understanding of the business. Data integration, or the ability of data to be assimilated across information systems, is contingent upon the integrity of data and

Directives, Policies, and Guidance

Description

Functional View

Mandatory Processes

Data must be defined as data that are maintained in support of a functional unit's operation and meet one or more of the following

- the data elements are key fields, that is, integration of information requires the data element;
- the organization must ensure the integrity of the data to comply with internal and external administrative reporting requirements;
- the data are reported on or used in official / regulatory reports;
- a broad cross section of users requires the data.

It is the responsibility of each data steward, in conjunction with the Data Governance Authority and the Enterprise Data Architect, to develop and maintain the Data Integrity and Integration Policy.

Documentation (metadata) on each data element will be maintained within a corporate repository according to specifications. The specifications will include both the technical metadata and definition of each element, as well as a complete interpretation that values for each element, and any special considerations, such as the values that determine whether a person is a member or

UNDERSTAND ADDRESS MEANING

Business Analyst needs to know what is the agreed upon meaning of Address

View and Edit Business Term Details-Address

Business Term Details Associations Additional Details Rich Media Library Collaboration Center History Workflow Log Valid Values

Address
General Business Terms → People and Organizations → Party Communication

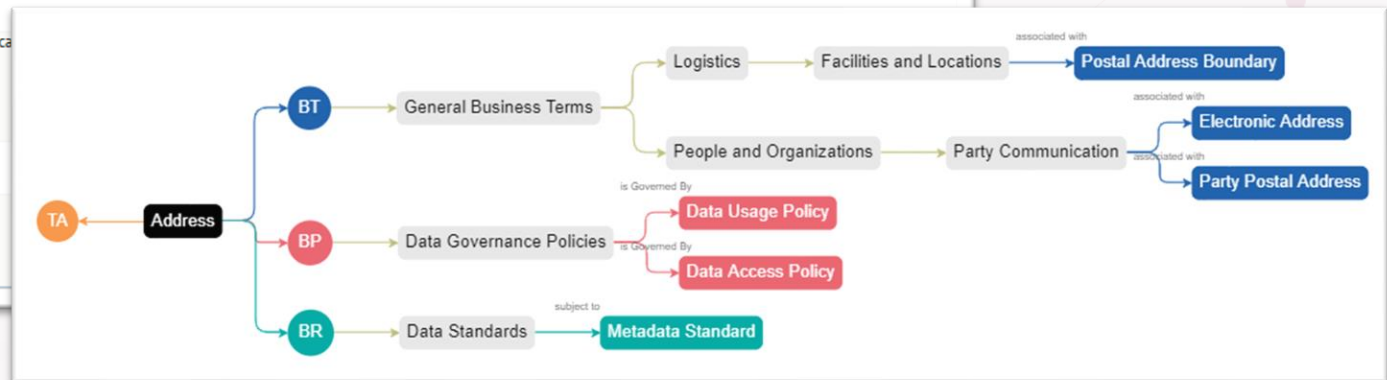
Classification

Acronym
☐ NO

Definition
Structured information that allows the unambiguous determination of an object for purposes of identification and location

Description
The specific details of the location

Notes



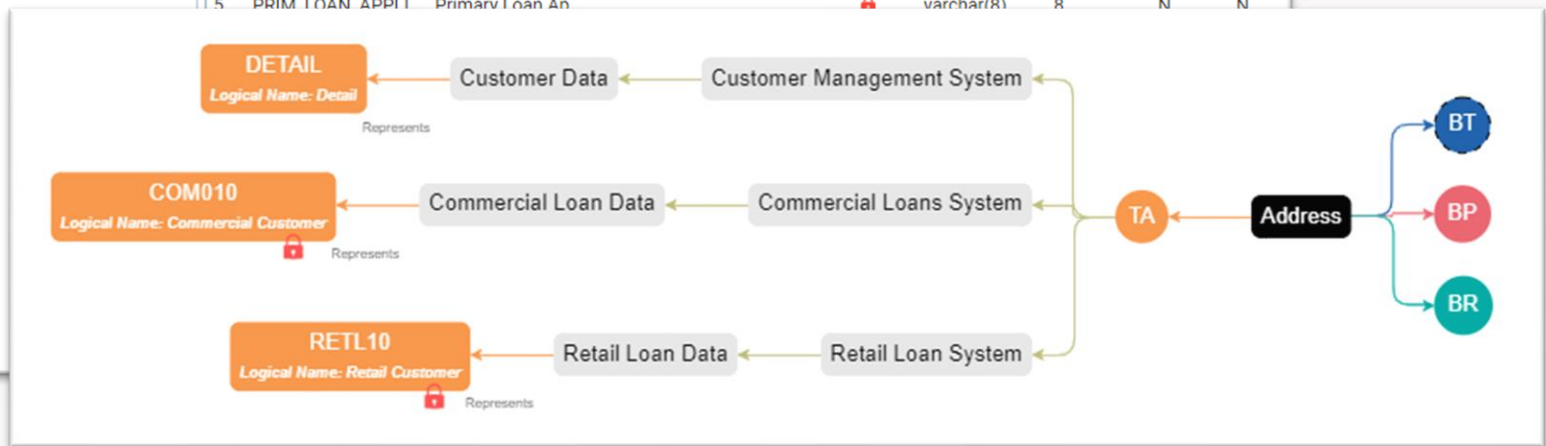
WHAT SYSTEMS

Business Analyst needs to know what systems contain Address information

The screenshot shows a 'System Catalogue' interface. On the left, a tree view shows the hierarchy: Sensitive Data > Metadata > Retail Loan System > Retail Loan Data (v1.00) > RETL10. The main panel is titled 'Columns' and shows statistics and a data dictionary for the selected column.

Statistics									
11 Total Columns		0/11 Columns With Expanded Logical Names		0/11 Total Primary Key Columns		0/11 Total Foreign Key Columns			

Data Dictionary									
#	Column Name	Logical Column Name	Column Comments	Column Definition	SDI Flag	Column Datatype	Length	Nullable Flag	Prim Key I
3	LOAN_EFFECTIVE_...	Loan Effective D...			🔒	datetime		N	N
4	LOAN_END_DT	Loan End Date			🔒	datetime		N	N
5	PRIM LOAN APPLI	Primary Loan An			🔒	varchar(8)	8	N	N



CHECK CONFORMANCE

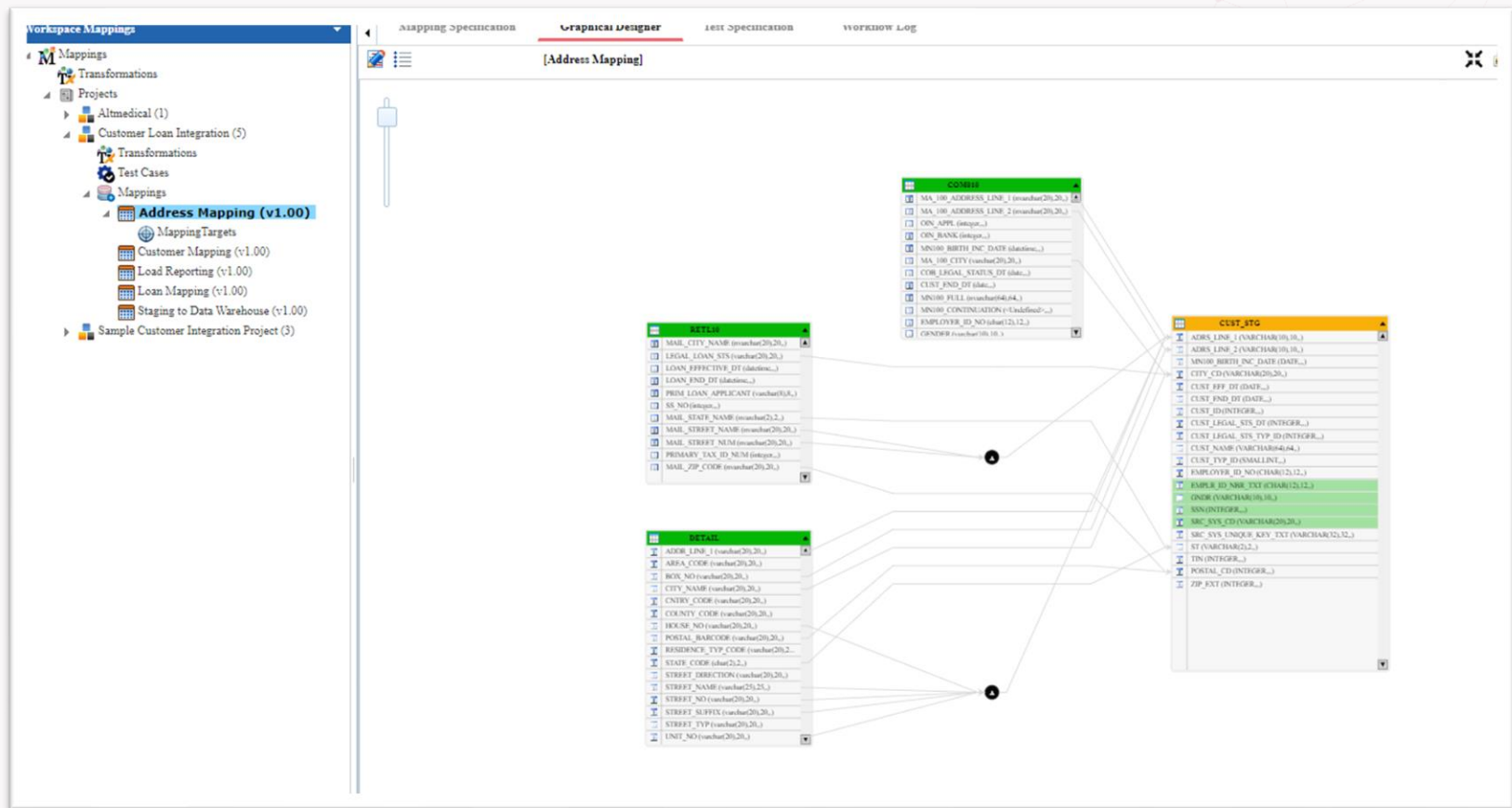
Business Analyst needs to know what standards are applied

The screenshot displays a data management interface. On the left, a 'System Catalogue' tree shows a hierarchy of systems, with 'Retail Loan Data (v1.00)' selected. Under this system, the 'MAIL_STATE_NAME' column is highlighted. The main panel shows the 'Column Properties' for this column, including technical details like data type (nvarchar(2)), storage type, and length (2). Below these are business properties such as data steward, column definition, and column comments. To the right, a table lists state codes (AL, AK, AZ, etc.) and their descriptions, organized by system name/environment and codeset name.

#	Code Name	Code Value	Code Description	System Name/Environment	Codeset Name	Version
1	Alabama	AL	Two letter state codes used by th	Customer Management System	US State Codes	1.01
2	Alaska	AK	Two letter state codes used by th	Customer Management System	US State Codes	1.01
3	Arizona	AZ	Two letter state codes used by th	Customer Management System	US State Codes	1.01
4	Arkansas	AR	Two letter state codes used by th	Customer Management System	US State Codes	1.01
5	California	CA	Two letter state codes used by th	Customer Management System	US State Codes	1.01
6	Colorado	CO	Two letter state codes used by th	Customer Management System	US State Codes	1.01
7	Connecticut	CT	Two letter state codes used by th	Customer Management System	US State Codes	1.01
8	Delaware	DE	Two letter state codes used by th	Customer Management System	US State Codes	1.01
9	District of Columbia	DC	Two letter state codes used by th	Customer Management System	US State Codes	1.01
10	Florida	FL	Two letter state codes used by th	Customer Management System	US State Codes	1.01
11	Georgia	GA	Two letter state codes used by th	Customer Management System	US State Codes	1.01
12	Hawaii	HI	Two letter state codes used by th	Customer Management System	US State Codes	1.01
13	Idaho	ID	Two letter state codes used by th	Customer Management System	US State Codes	1.01
14	Illinois	IL	Two letter state codes used by th	Customer Management System	US State Codes	1.01
15	Indiana	IN	Two letter state codes used by th	Customer Management System	US State Codes	1.01
16	Iowa	IA	Two letter state codes used by th	Customer Management System	US State Codes	1.01
17	Kansas	KS	Two letter state codes used by th	Customer Management System	US State Codes	1.01
18	Kentucky	KY	Two letter state codes used by th	Customer Management System	US State Codes	1.01
19	Louisiana	LA	Two letter state codes used by th	Customer Management System	US State Codes	1.01
20	Maine	ME	Two letter state codes used by th	Customer Management System	US State Codes	1.01
21	Maryland	MD	Two letter state codes used by th	Customer Management System	US State Codes	1.01
22	Massachusetts	MA	Two letter state codes used by th	Customer Management System	US State Codes	1.01
23	Michigan	MI	Two letter state codes used by th	Customer Management System	US State Codes	1.01
24	Minnesota	MN	Two letter state codes used by th	Customer Management System	US State Codes	1.01
25	Mississippi	MS	Two letter state codes used by th	Customer Management System	US State Codes	1.01

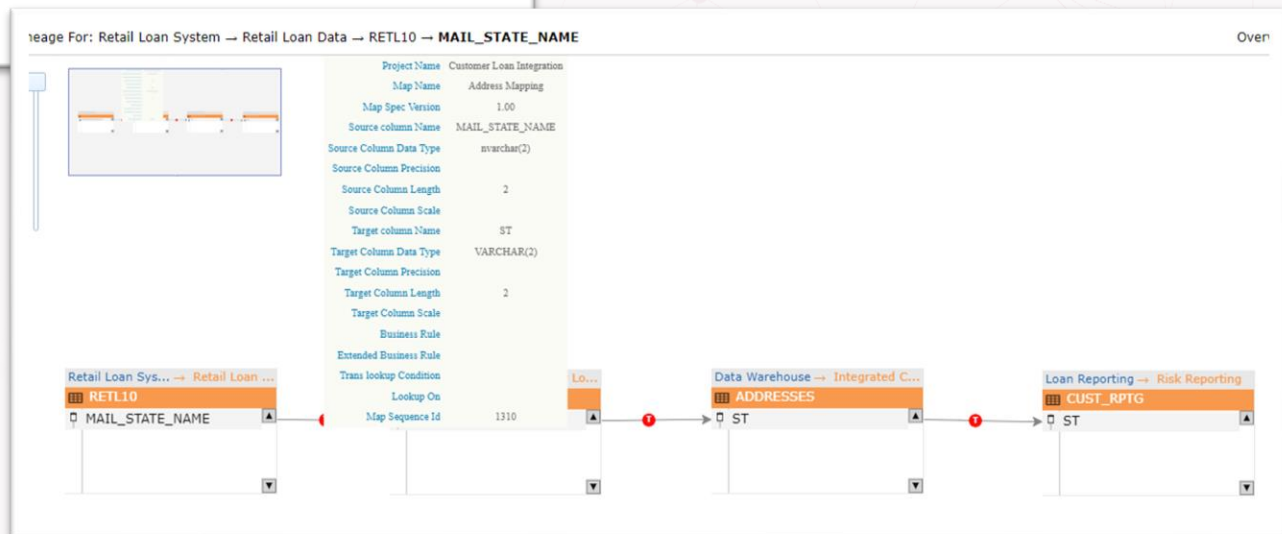
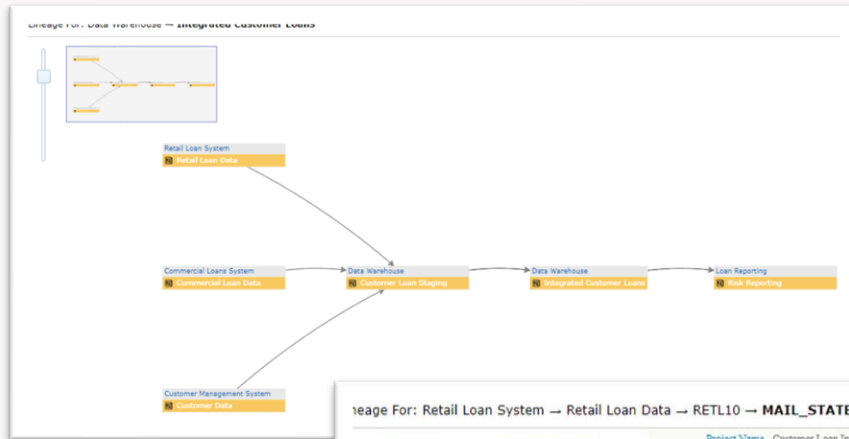
FIX NON-CONFORMANCE

Business Analyst initiates project to integrate Address

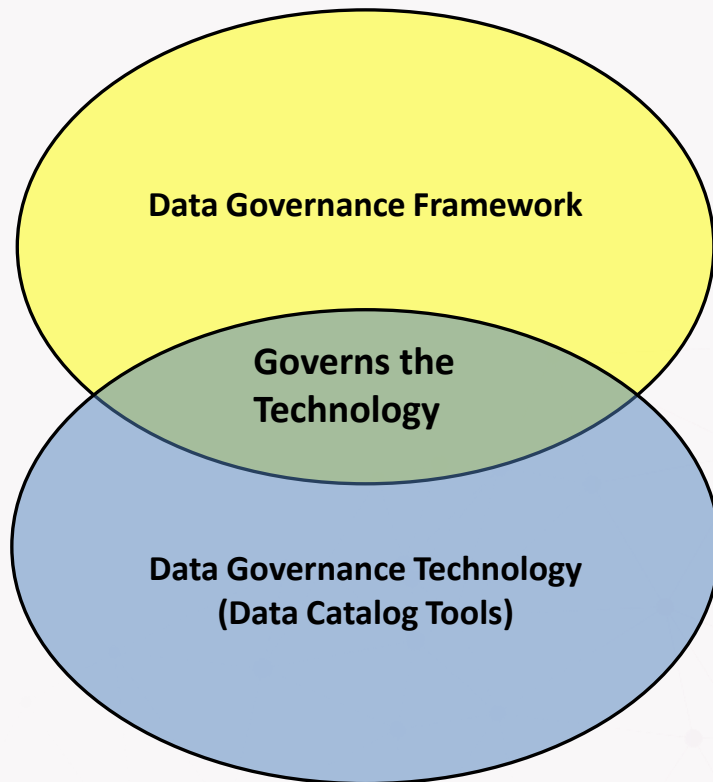


LINEAGE ANALYSIS

Business Analyst track Address lineage



Summary & Conclusion/ Call to Action



Data Governance Program provides the consistent processes, roles, policies, standards, and metrics that Data Governance technology needs in order to manage data

Quality control over the data being governed

Data Governance Technology manages the data with guidance from the data governance program

Contact Information

✓ For a more In-Depth Understanding of COMPASS or erwin DI

- Visit
 - www.sandhillconsultants.com
- Or Contact:
 - **Sandhill:**
info@sandhillconsultants.com
 - In-person Contact:
Robert.Lutton@sandhillconsultants.com
 - Or Call
 - +1 905 847 5882

✓ Follow our social media for the latest Sandhill/erwin info & helpful tips/tricks etc.



@sandhillconsultna



[linkedin.com/company/sandhill-consultants](https://www.linkedin.com/company/sandhill-consultants)